

VISIBILITY | TORQUEABILITY | PUSHABILITY

Illuminate the path through complex anatomy



MORE THAN
30
TIP CURVES

Slip-Cath[®] Beacon[®] Tip
HYDROPHILIC ANGIOGRAPHIC CATHETER





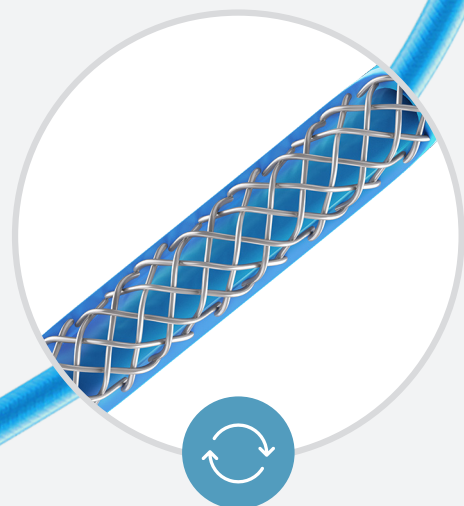
Visibility

Brilliant under fluoroscopy



Pushability

Reduced friction



Torqueability

Kink resistant

Visibility

Under fluoroscopy, the easy-to-see tip lights the way through every turn in the body's anatomy.

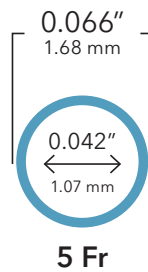
Pushability

The hydrophilic coating and tapered tip facilitate vessel selection, ranging from simple vasculature to more challenging anatomy. The increased lubricity allows the user to navigate the vasculature system smoothly.

Torqueability

A nylon catheter construction with stainless steel braiding through the shaft provides control, pushability, and torque response.

Flow Rates



SCBR5.0-38					
		MAXIMUM FLOW RATE		MAXIMUM RECOMMENDED PRESSURE	
Fr	Catheter Length cm	Flow Rate mL/sec	kg/cm ²	psi	
5.0	40	13	82	1200	
5.0	65	11	82	1200	
5.0	80	9	82	1200	
5.0	90	9	82	1200	
5.0	100	9	82	1200	
5.0	125	7	82	1200	

Packaging

The foil packaging protects device integrity.

- Updated packaging protects catheter tips from separating and is safer for patients.
- The foil pouch serves as an additional protective layer against environmental factors.
- A plastic back slat protects against kinking during transportation.

ORDERING INFORMATION

ORDERING RPN KEY



Order Number	Reference Part Number (RPN)	Fr	Accepts Wire Guide Diameter inch	Length cm		
G23688	SCBR5.0-38-65-P-NS-DAV	5.0	0.038	65		DAV
G11996	SCBR5.0-38-100-P-NS-DAV	5.0	0.038	100		
G13413	SCBR5.0-38-125-P-NS-DAV	5.0	0.038	125		
G12716	SCBR5.0-38-65-P-NS-SIM1	5.0	0.038	65		SIM1
G12000	SCBR5.0-38-100-P-NS-SIM1	5.0	0.038	100		
G32369	SCBR5.0-38-125-P-NS-SIM1	5.0	0.038	125		
G23691	SCBR5.0-38-65-P-NS-SIM2	5.0	0.038	65		SIM2
G11992	SCBR5.0-38-100-P-NS-SIM2	5.0	0.038	100		
G13200	SCBR5.0-38-125-P-NS-SIM2	5.0	0.038	125		
G12007	SCBR5.0-38-100-P-NS-VERT	5.0	0.038	100		VERT
G12168	SCBR5.0-38-125-P-NS-VERT	5.0	0.038	125		
G13319	SCBR5.0-38-65-P-NS-H1	5.0	0.038	65		H1
G11991	SCBR5.0-38-100-P-NS-H1	5.0	0.038	100		
G23696	SCBR5.0-38-125-P-NS-H1	5.0	0.038	125		
G23693	SCBR5.0-38-100-P-NS-HN4	5.0	0.038	100		HN4
G11997	SCBR5.0-38-100-P-NS-JB1	5.0	0.038	100		JB1
G13530	SCBR5.0-38-125-P-NS-JB1	5.0	0.038	125		
G11998	SCBR5.0-38-100-P-NS-JB2	5.0	0.038	100		JB2
G11999	SCBR5.0-38-100-P-NS-MAN	5.0	0.038	100		MAN
G12001	SCBR5.0-38-100-P-NS-SIM3	5.0	0.038	100		SIM3
G13163	SCBR5.0-38-100-P-NS-VTK	5.0	0.038	100		VTK
G12082	SCBR5.0-38-125-P-NS-VTK	5.0	0.038	125		
G36214	SCBR5.0-38-80-P-NS-RH	5.0	0.038	80		RH
G59854	SCBR5.0-35-65-P-NS-RBT	5.0	0.035	65		RBT
G59855	SCBR5.0-35-90-P-NS-RBT	5.0	0.035	90		
G59856	SCBR5.0-38-65-P-NS-RBT	5.0	0.038	65		
G59857	SCBR5.0-38-90-P-NS-RBT	5.0	0.038	90		
G12003	SCBR5.0-38-65-P-NS-C1	5.0	0.038	65		C1

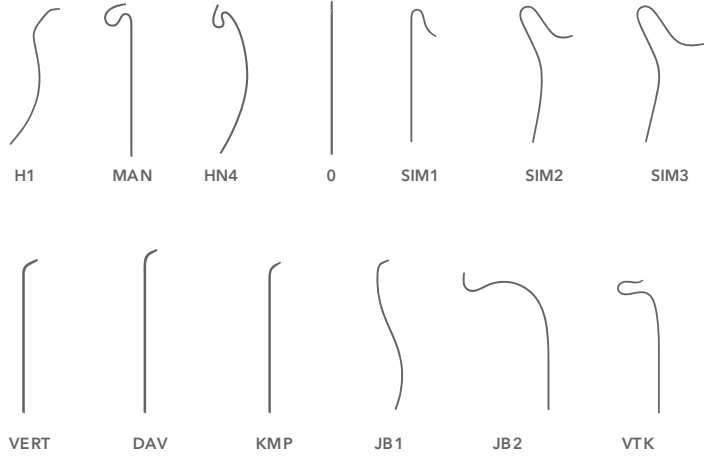
ORDERING RPN KEY



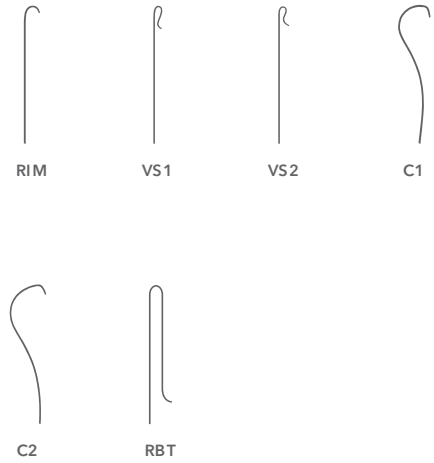
Order Number	Reference Part Number (RPN)	Fr	Accepts Wire Guide Diameter inch	Length cm		
G11994	SCBR5.0-38-65-P-NS-C2	5.0	0.038	65		C2
G12006	SCBR5.0-38-80-P-NS-C2	5.0	0.038	80		
G12008	SCBR5.0-38-100-P-NS-C2	5.0	0.038	100		
G12004	SCBR5.0-38-65-P-NS-C3	5.0	0.038	65		C3
G13272	SCBR5.0-38-65-P-NS-RC2	5.0	0.038	65		RC2
G13092	SCBR5.0-38-65-P-NS-RDC	5.0	0.038	65		RDC
G11995	SCBR5.0-38-65-P-NS-RIM	5.0	0.038	65		RIM
G13431	SCBR5.0-38-80-P-NS-VS	5.0	0.038	80		VS
G13432	SCBR5.0-38-80-P-NS-VS1	5.0	0.038	80		VS1
G13433	SCBR5.0-38-80-P-NS-VS2	5.0	0.038	80		VS2
G13434	SCBR5.0-38-80-P-NS-VS3	5.0	0.038	80		VS3
G12798	SCBR5.0-38-65-P-NS-LEV1	5.0	0.038	65		LEV1
G12156	SCBR5.0-38-65-P-NS-KMP	5.0	0.038	65		KMP
G28535	SCBR5.0-38-100-P-NS-KMP	5.0	0.038	100		
G11993	SCBR5.0-38-40-P-NS-KMP	5.0	0.038	40		
G23689	SCBR5.0-38-65-P-NS-MPA	5.0	0.038	65		MPA
G23692	SCBR5.0-38-80-P-NS-MPA	5.0	0.038	80		
G12002	SCBR5.0-38-100-P-NS-MPA	5.0	0.038	100		
G12179	SCBR5.0-38-65-P-NS-TEGT	5.0	0.038	65		TEGT
G23694	SCBR5.0-38-100-P-NS-TEGT	5.0	0.038	100		
G32367	SCBR5.0-38-125-P-NS-TEGT	5.0	0.038	125		
G36320	SCBR5.0-38-65-P-NS-TC	5.0	0.038	65		TC
G36322	SCBR5.0-38-65-P-NS-TC-BNK	5.0	0.038	65		TC-BNK
G43120	SCBR5.0-38-100-P-NS-RVC	5.0	0.038	100		RVC
G12009	SCBR5.0-38-65-P-NS-0	5.0	0.038	65		0
G12005	SCBR5.0-38-100-P-NS-0	5.0	0.038	100		
G32366	SCBR5.0-38-125-P-NS-0	5.0	0.038	125		

Common Catheter Curves

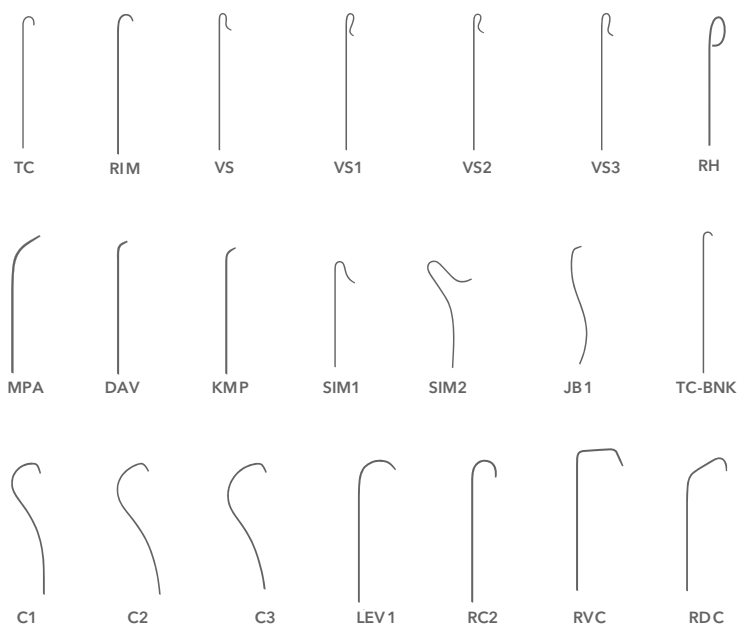
CEREBRAL



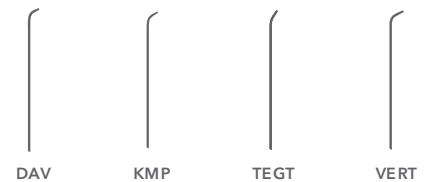
BIFURCATION/PELVIC



VISCERAL/AORTIC



MULTIPURPOSE



Vessel (average diameter)

CEREBRAL

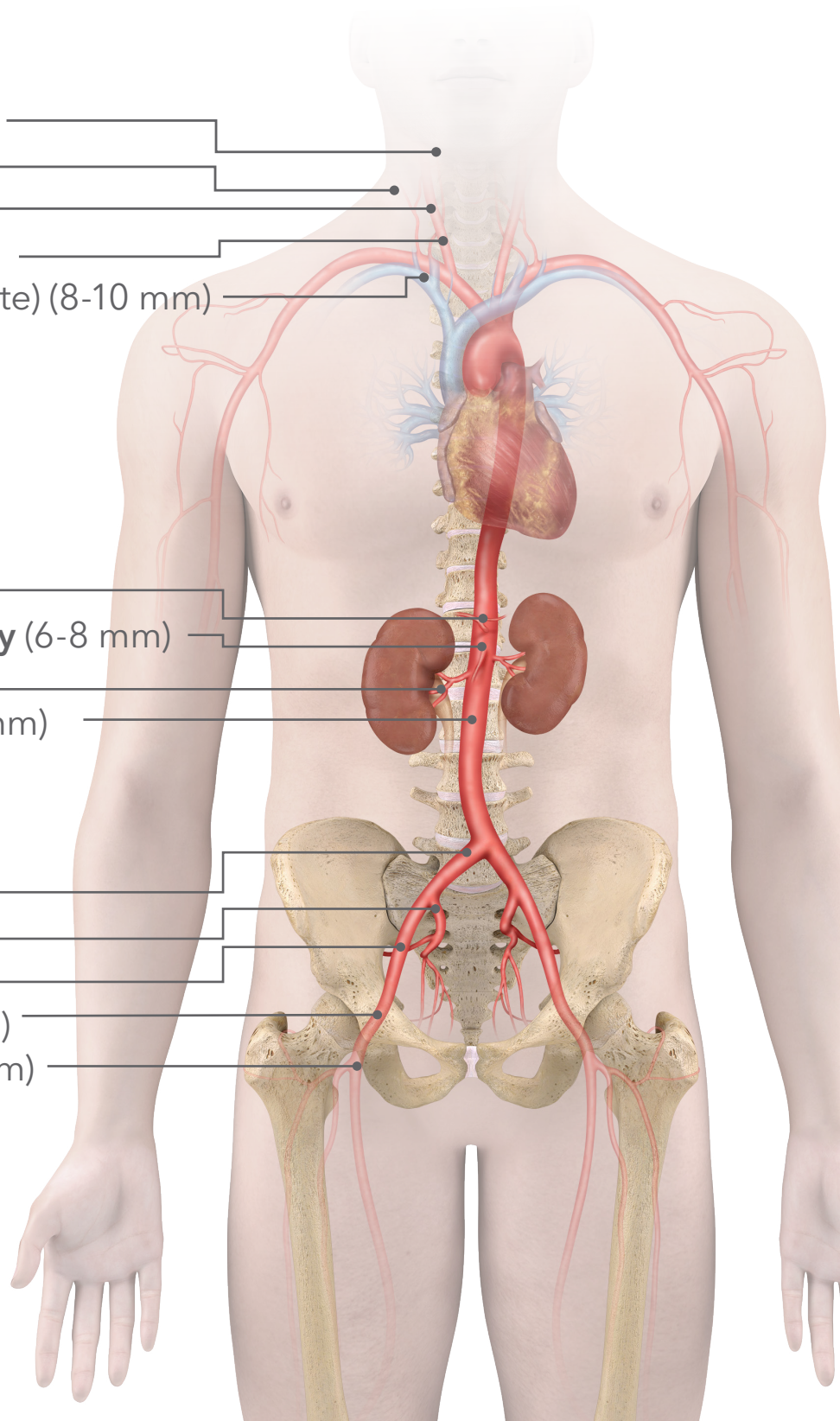
- External carotid (5-6 mm)
- Vertebral (3-5 mm)
- Internal carotid (5-6 mm)
- Common carotid (5-8 mm)
- Brachiocephalic (innominate) (8-10 mm)

VISCERAL/AORTIC

- Celiac trunk (5-7 mm)
- Superior Mesenteric Artery (6-8 mm)
- Renal (5-7 mm)
- Descending aorta (16-18 mm)

BIFURCATION/PELVIC

- Common iliac (7-10 mm)
- Internal iliac (5-6 mm)
- External iliac (6-8 mm)
- Common femoral (6-8 mm)
- Superficial femoral (4-6 mm)





Scan this code for
more information

Customer Service

EU Website: cookmedical.eu
EDI: cookmedical.eu/edi
Distributors: +353 61239240, ssc.distributors@cookmedical.com
Austria: +43 179567121, oe.orders@cookmedical.com
Belgium: +32 27001702, be.orders@cookmedical.com
Denmark: +45 38487607, da.orders@cookmedical.com
Finland: +358 972519996, fi.orders@cookmedical.com
France: +33 171230269, fr.orders@cookmedical.com
Germany: +49 6950072804, de.orders@cookmedical.com
Hungary: +36 17779199, hu.orders@cookmedical.com
Iceland: +354 8007615, IS.orders@cookmedical.com
Ireland: +353 61239252, ie.orders@cookmedical.com
Italy: +39 0269682853, it.orders@cookmedical.com
Netherlands: +31 202013367, nl.orders@cookmedical.com
Norway: +47 23162968, no.orders@cookmedical.com
Spain: +34 912702691, es.orders@cookmedical.com
Sweden: +46 858769468, se.orders@cookmedical.com
Switzerland - French: +41 448009609, fr.orders@cookmedical.com
Switzerland - Italian: +41 448009609, it.orders@cookmedical.com
Switzerland - German: +41 448009609, de.orders@cookmedical.com
United Kingdom: +44 2073654183, uk.orders@cookmedical.com

USA Website: cookmedical.com

EDI: cookmedical.com/edi.do

Americas:

Phone: +1 812.339.2235, 800.457.4500, Fax: 800.554.8335

E-mail: customersupport@cookmedical.com

Australia:

Phone: +61 734346000, 1800777222, Fax: +61 734346001, 1800077283

E-mail: cau.custserv@cookmedical.com



AI, ESC, IR, OHNS, PI, RH, SUR-8.5X11