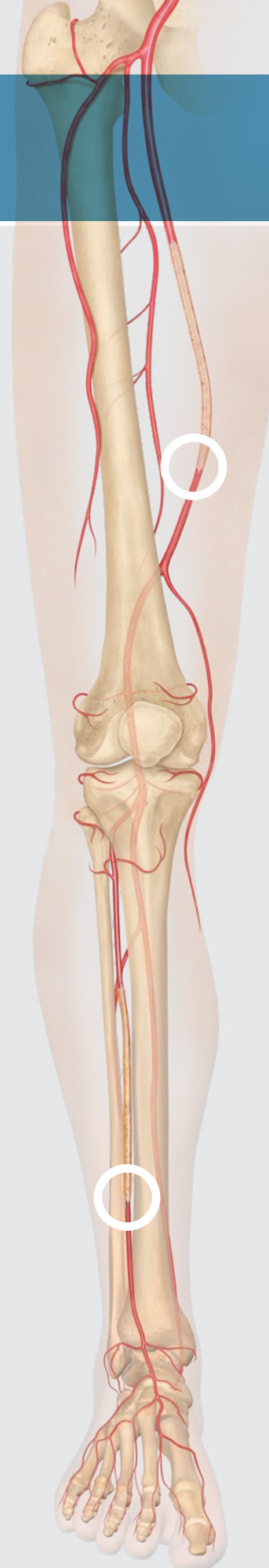
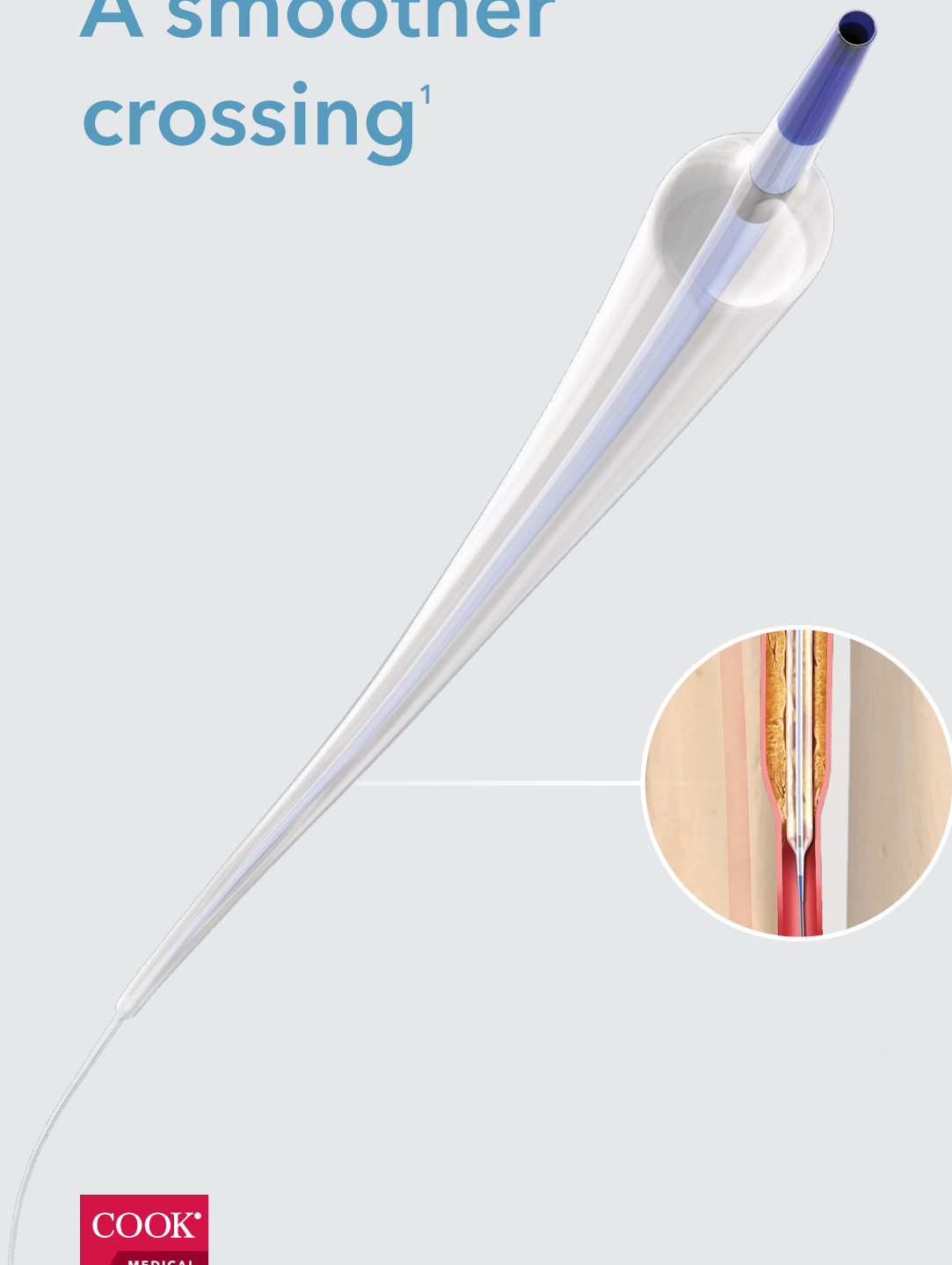


Advance Serenity[®] 18

HYDROPHILIC PTA BALLOON DILATATION CATHETER

A smoother crossing¹



FEATURES & BENEFITS



Next-gen hydrophilic coating

Provides lubricity to navigate through diseased vessels with low friction.



Laser-formed tip

Creates trackability and smooth transitions from wire to tip, allowing it to cross complex lesions.¹



Coaxial shaft design

Balances stiffness and flexibility to deliver pushability to cross distal lesions.¹

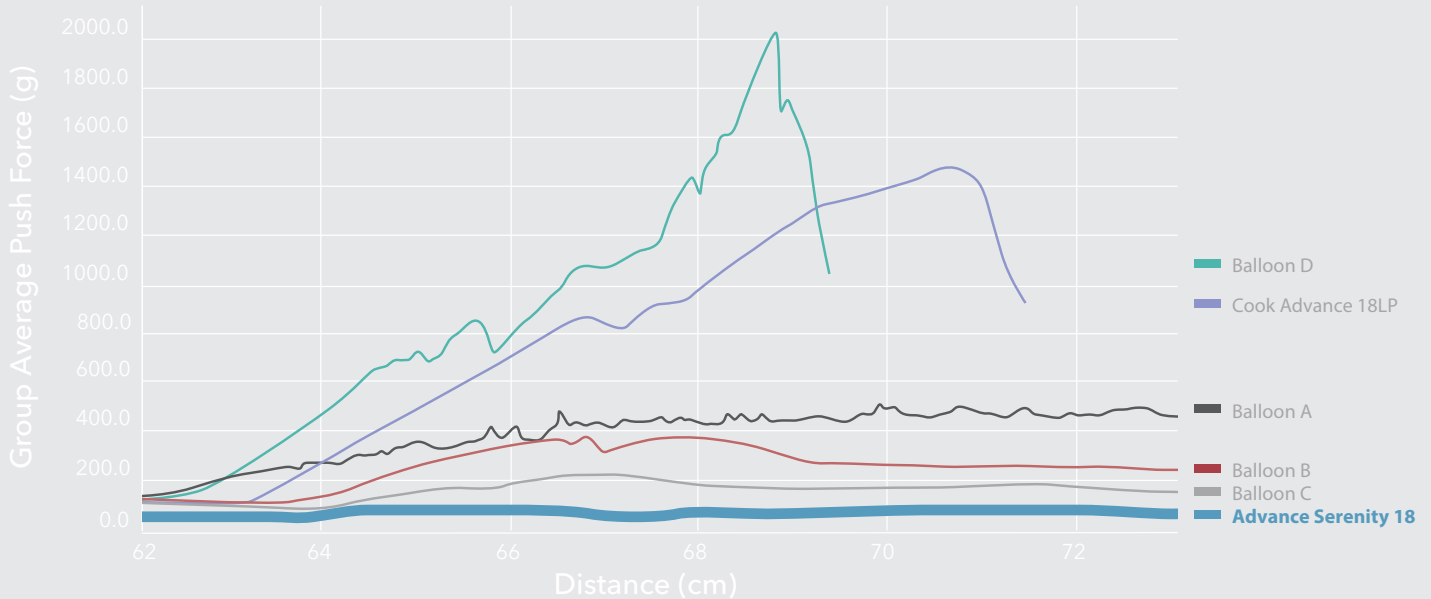


Pleated balloon

Facilitates a smooth rewrap.

Benchtop test crossing 0.9 inch synthetic lesion

Advance Serenity 18 vs other 0.018 inch PTA balloon catheters²



Compared to leading competitors, the Advance Serenity 18 has proven to have excellent crossability using minimal force. With its **laser-tip design** and **next-generation hydrophilic coating**, the Advance Serenity 18 demonstrated superior crossability within a synthetic lesion. **Coaxial shaft design** balances stiffness and flexibility to deliver pushability to cross distal lesions. Its **pleated balloon design** and our broad range of diameters enable you to treat the entire limb and may help save time. ¹

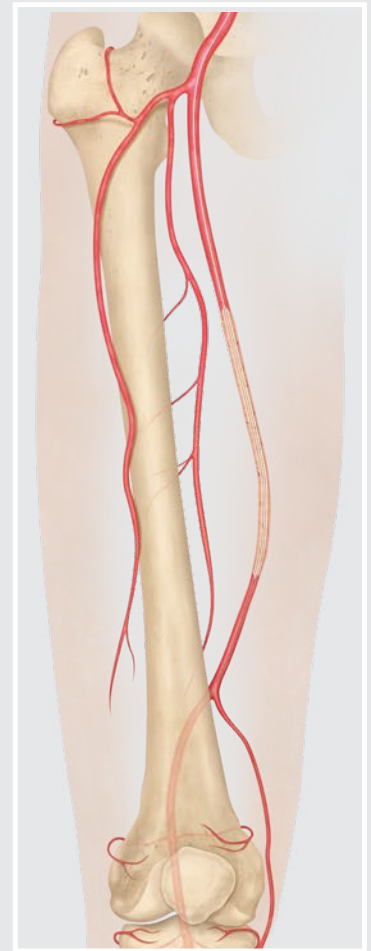
1. Advance Serenity. Doc #20155, rev 00 (10 MAR 2020). Surmodics, Inc.
 2. Advance Serenity. Test Report CD2019-106. (27 DEC 2019). Surmodics, Inc.

Advance Serenity® 18 - Above the knee

Catheter platform	Over the wire (OTW)
Recommended wire guide	0.018 inch
Sheath compatibility	4, 4.5, 5, 5.5 Fr
Catheter working length	90 cm and 135 cm (all sizes)
Balloon diameters	5-10 mm
Balloon lengths	20-150 mm
Nominal pressure	8 atm (all sizes)
Rated burst pressure	10-16 atm

Advance Serenity® 18 - Below the knee

Catheter platform	Over the wire (OTW)
Recommended wire guide	0.018 inch
Sheath compatibility	4 Fr (all sizes)
Catheter working length	120 cm and 150 cm (all sizes)
Balloon diameters	2-4 mm (0.5 mm increments)
Balloon lengths	20-220 mm
Nominal pressure	8 atm (all sizes)
Rated burst pressure	16 atm (all sizes)



BELOW THE KNEE

Order Number	Reference Part Number	Wire Guide Diameter inch	Balloon Inflated Diameter mm	Balloon Length cm	Recommended Introducer Fr	Exact Catheter Diameter Fr	Nominal Pressure atm	Rated Burst Pressure atm
0.018 inch Diameter Guide – 150 cm Long OTW Shaft								
G57918	SER18-150-20-20	0.018	2	2	4	3.6	8	16
G57919	SER18-150-20-40	0.018	2	4	4	3.6	8	16
G57920	SER18-150-20-60	0.018	2	6	4	3.6	8	16
G57921	SER18-150-20-80	0.018	2	8	4	3.6	8	16
G57922	SER18-150-20-100	0.018	2	10	4	3.6	8	16
G57923	SER18-150-20-150	0.018	2	15	4	3.6	8	16
G57924	SER18-150-20-220	0.018	2	22	4	3.6	8	16
G57945	SER18-150-25-20	0.018	2.5	2	4	3.6	8	16
G57946	SER18-150-25-40	0.018	2.5	4	4	3.6	8	16
G57947	SER18-150-25-60	0.018	2.5	6	4	3.6	8	16
G57948	SER18-150-25-80	0.018	2.5	8	4	3.6	8	16
G57949	SER18-150-25-100	0.018	2.5	10	4	3.6	8	16
G57950	SER18-150-25-150	0.018	2.5	15	4	3.6	8	16
G57951	SER18-150-25-220	0.018	2.5	22	4	3.6	8	16
G57925	SER18-150-30-20	0.018	3	2	4	3.6	8	16
G57926	SER18-150-30-40	0.018	3	4	4	3.6	8	16
G57927	SER18-150-30-60	0.018	3	6	4	3.6	8	16
G57928	SER18-150-30-80	0.018	3	8	4	3.6	8	16
G57929	SER18-150-30-100	0.018	3	10	4	3.6	8	16
G57952	SER18-150-30-150	0.018	3	15	4	3.6	8	16
G57930	SER18-150-30-220	0.018	3	22	4	3.6	8	16
G57931	SER18-150-35-20	0.018	3.5	2	4	3.6	8	16
G57932	SER18-150-35-40	0.018	3.5	4	4	3.6	8	16
G57933	SER18-150-35-60	0.018	3.5	6	4	3.6	8	16
G57934	SER18-150-35-80	0.018	3.5	8	4	3.6	8	16
G57935	SER18-150-35-100	0.018	3.5	10	4	3.6	8	16
G57936	SER18-150-35-150	0.018	3.5	15	4	3.6	8	16
G57937	SER18-150-35-220	0.018	3.5	22	4	3.6	8	16
G57938	SER18-150-40-20	0.018	4	2	4	3.6	8	16
G57939	SER18-150-40-40	0.018	4	4	4	3.6	8	16
G57944	SER18-150-40-60	0.018	4	6	4	3.6	8	16
G57940	SER18-150-40-80	0.018	4	8	4	3.6	8	16
G57941	SER18-150-40-100	0.018	4	10	4	3.6	8	16
G57942	SER18-150-40-150	0.018	4	15	4	3.6	8	16
G57943	SER18-150-40-220	0.018	4	22	4	3.6	8	16

Some products or part numbers may not be available in all markets. Contact your local Cook representative or Customer Support & Distribution for details.

ABOVE THE KNEE

Order Number	Reference Part Number	Wire Guide Diameter inch	Balloon Inflated Diameter mm	Balloon Length cm	Recommended Introducer Fr	Exact Catheter Diameter Fr	Nominal Pressure atm	Rated Burst Pressure atm
0.018 inch Diameter Guide – 135 cm Long OTW Shaft								
G59786	SER18-135-50-20	0.018	5	2	4	3.6	8	16
G59787	SER18-135-50-40	0.018	5	4	4	3.6	8	16
G59788	SER18-135-50-60	0.018	5	6	4	3.6	8	16
G59789	SER18-135-50-80	0.018	5	8	4	3.6	8	16
G59790	SER18-135-50-100	0.018	5	10	4	3.6	8	16
G59791	SER18-135-50-120	0.018	5	12	4	3.6	8	16
G59792	SER18-135-50-150	0.018	5	15	4	3.6	8	16
G59793	SER18-135-60-20	0.018	6	2	4.5	3.6	8	16
G59794	SER18-135-60-40	0.018	6	4	4.5	3.6	8	16
G59795	SER18-135-60-60	0.018	6	6	4.5	3.6	8	16
G59796	SER18-135-60-80	0.018	6	8	4.5	3.6	8	16
G59797	SER18-135-60-100	0.018	6	10	4.5	3.6	8	16
G59798	SER18-135-60-120	0.018	6	12	4.5	3.6	8	16
G59799	SER18-135-60-150	0.018	6	15	4.5	3.6	8	16
G59800	SER18-135-70-20	0.018	7	2	4.5	3.6	8	14
G59801	SER18-135-70-40	0.018	7	4	4.5	3.6	8	14
G59802	SER18-135-70-60	0.018	7	6	4.5	3.6	8	14
G59803	SER18-135-70-80	0.018	7	8	5	4.6	8	14
G59804	SER18-135-70-100	0.018	7	10	5	4.6	8	14
G59805	SER18-135-70-120	0.018	7	12	5	4.6	8	14
G59820	SER18-135-70-150	0.018	7	15	5	4.6	8	14
G59806	SER18-135-80-20	0.018	8	2	5	4.6	8	12
G59807	SER18-135-80-40	0.018	8	4	5	4.6	8	12
G59808	SER18-135-80-60	0.018	8	6	5	4.6	8	12
G59810	SER18-135-80-80	0.018	8	8	5	4.6	8	12
G59809	SER18-135-90-20	0.018	9	2	5	4.6	8	10
G59811	SER18-135-90-40	0.018	9	4	5	4.6	8	10
G59812	SER18-135-90-60	0.018	9	6	5	4.6	8	10
G59813	SER18-135-90-80	0.018	9	8	5	4.6	8	10
G59814	SER18-135-10-20	0.018	10	2	5.5	4.6	8	10
G59815	SER18-135-10-40	0.018	10	4	5.5	4.6	8	10
G59816	SER18-135-10-60	0.018	10	6	5.5	4.6	8	10
G59817	SER18-135-10-80	0.018	10	8	5.5	4.6	8	10

Some products or part numbers may not be available in all markets. Contact your local Cook representative or Customer Support & Distribution for details.

Order Number	Reference Part Number	Wire Guide Diameter inch	Balloon Inflated Diameter mm	Balloon Length cm	Recommended Introducer Fr	Exact Catheter Diameter Fr	Nominal Pressure atm	Rated Burst Pressure atm
0.018 inch Diameter Guide – 90 cm Long OTW Shaft								
G59753	SER18-90-50-20	0.018	5	2	4	3.6	8	16
G59754	SER18-90-50-40	0.018	5	4	4	3.6	8	16
G59755	SER18-90-50-60	0.018	5	6	4	3.6	8	16
G59756	SER18-90-50-80	0.018	5	8	4	3.6	8	16
G59757	SER18-90-50-100	0.018	5	10	4	3.6	8	16
G59758	SER18-90-50-120	0.018	5	12	4	3.6	8	16
G59759	SER18-90-50-150	0.018	5	15	4	3.6	8	16
G59760	SER18-90-60-20	0.018	6	2	4.5	3.6	8	16
G59761	SER18-90-60-40	0.018	6	4	4.5	3.6	8	16
G59762	SER18-90-60-60	0.018	6	6	4.5	3.6	8	16
G59763	SER18-90-60-80	0.018	6	8	4.5	3.6	8	16
G59764	SER18-90-60-100	0.018	6	10	4.5	3.6	8	16
G59765	SER18-90-60-120	0.018	6	12	4.5	3.6	8	16
G59766	SER18-90-60-150	0.018	6	15	4.5	3.6	8	16
G59767	SER18-90-70-20	0.018	7	2	4.5	3.6	8	14
G59768	SER18-90-70-40	0.018	7	4	4.5	3.6	8	14
G59769	SER18-90-70-60	0.018	7	6	4.5	3.6	8	14
G59770	SER18-90-70-80	0.018	7	8	5	4.6	8	14
G59771	SER18-90-70-100	0.018	7	10	5	4.6	8	14
G59772	SER18-90-70-120	0.018	7	12	5	4.6	8	14
G59773	SER18-90-70-150	0.018	7	15	5	4.6	8	14
G59774	SER18-90-80-20	0.018	8	2	5	3.6	8	12
G59775	SER18-90-80-40	0.018	8	4	5	3.6	8	12
G59776	SER18-90-80-60	0.018	8	6	5	3.6	8	12
G59777	SER18-90-80-80	0.018	8	8	5	4.6	8	12
G59778	SER18-90-90-20	0.018	9	2	5	4.6	8	10
G59779	SER18-90-90-40	0.018	9	4	5	4.6	8	10
G59780	SER18-90-90-60	0.018	9	6	5	4.6	8	10
G59781	SER18-90-90-80	0.018	9	8	5	4.6	8	10
G59782	SER18-90-10-20	0.018	10	2	5.5	4.6	8	10
G59783	SER18-90-10-40	0.018	10	4	5.5	4.6	8	10
G59784	SER18-90-10-60	0.018	10	6	5.5	4.6	8	10
G59785	SER18-90-10-80	0.018	10	8	5.5	4.6	8	10

Some products or part numbers may not be available in all markets. Contact your local Cook representative or Customer Support & Distribution for details.



Advance Serenity® 18

HYDROPHILIC PTA BALLOON DILATATION CATHETER

The Advance Serenity 18 Hydrophilic PTA Balloon Dilatation Catheter is indicated for the percutaneous transluminal angioplasty (PTA) dilation of peripheral vasculature stenosis in the iliac, femoral, popliteal, infra-popliteal, and renal arteries, and for the treatment of obstructive lesions of native or synthetic arteriovenous dialysis fistulae.

Customer Service

EU Website: cookmedical.eu
EDI: cookmedical.eu/edi
Distributors: +353 61239240, ssc.distributors@cookmedical.com
Austria: +43 179567121, oe.orders@cookmedical.com
Belgium: +32 27001702, be.orders@cookmedical.com
Denmark: +45 38487607, da.orders@cookmedical.com
Finland: +358 972519996, fi.orders@cookmedical.com
France: +33 171230269, fr.orders@cookmedical.com
Germany: +49 6950072804, de.orders@cookmedical.com
Hungary: +36 17779199, hu.orders@cookmedical.com
Iceland: +354 8007615, IS.orders@cookmedical.com
Ireland: +353 61239252, ie.orders@cookmedical.com
Italy: +39 0269682853, it.orders@cookmedical.com
Netherlands: +31 202013367, nl.orders@cookmedical.com
Norway: +47 23162968, no.orders@cookmedical.com
Spain: +34 912702691, es.orders@cookmedical.com
Sweden: +46 858769468, se.orders@cookmedical.com
Switzerland - French: +41 448009609, fr.orders@cookmedical.com
Switzerland - Italian: +41 448009609, it.orders@cookmedical.com
Switzerland - German: +41 448009609, de.orders@cookmedical.com
United Kingdom: +44 2073654183, uk.orders@cookmedical.com

USA Website: cookmedical.com

EDI: cookmedical.com/edi.do

Americas:

Phone: +1 812.339.2235, 800.457.4500, Fax: 800.554.8335

E-mail: customersupport@cookmedical.com

Australia:

Phone: +61 734346000, 1800777222, Fax: +61 734346001, 1800077283

E-mail: cau.custserv@cookmedical.com



AI, ESC, IR, OHNS, PI, RH, SUR-8.5X11